



# Holmes Chapel Primary School

Holmes Chapel Primary School  
Middlewich Road  
Holmes Chapel  
Cheshire  
CW4 7EB

Headteacher: Mrs F. Gresty B.A (Hons), NPQH  
head@holmeschapelprimary.cheshire.sch.uk

T: 01477 533336  
F: 01477 544556

Friday 28<sup>th</sup> June 2024

Dear Parents/Carers,

## Events in school

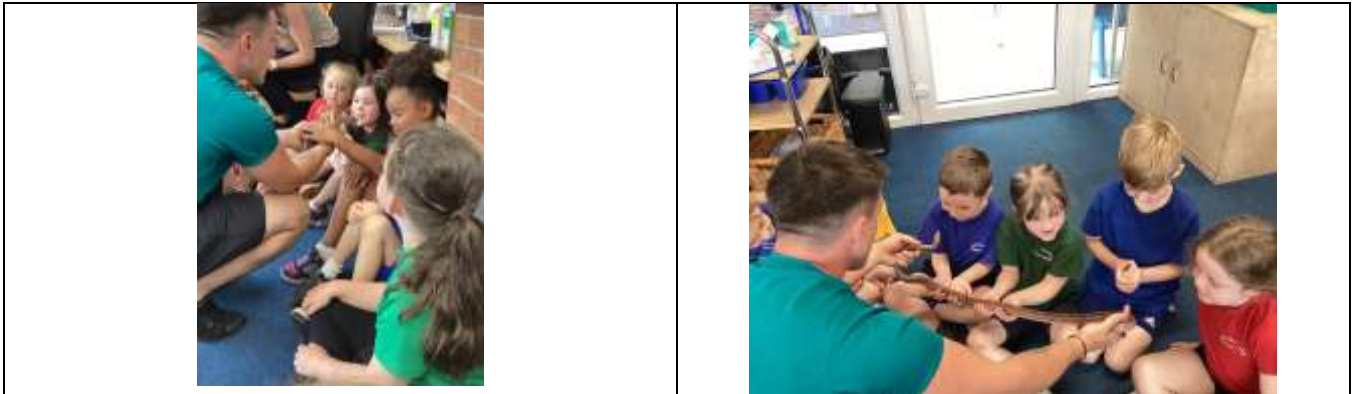
Year 2 visit to Stockport Air Raid shelters - Year 2 had a fantastic time visiting the air raid shelter and museum in Stockport last Thursday. They had a good tour of the shelter, kept their spirits up by singing songs and were fascinated by the triple bunks. After lunch, the children took part in three workshops. They practised helping out at home with the washing and cooking, they sorted salvage for the Cogs group, tried on replica gas masks and handled other artefacts such as shrapnel and bombs (all safe). The museum staff were impressed with the children's knowledge and behaviour. We were proud of all the children; they represented our school well. Have a look at the photo gallery on the year 2 page of the school website for more photographs.



Reception singing concert - This week our lovely Reception children sang their hearts out at a concert for parents. The children sang songs they have been learning in class, including a round of 'Frere Jacques', and 'The sun has got his hat on' with Makaton sign language. The children's Year 6 buddies joined them to finish with 'You've got a friend in me', which shows the special bond the children in Reception and Year 6 have made with their buddies this year.



Year 1 Zoolab visit – On Monday Year 1 had a visit from Zoolab to help us with our new science topic 'Animals'. We had lots of fun and saw a snake, tarantula, millipede, cockroach, and a rat! We were able to classify the animals and really enjoyed the experience. We were really brave!



Sports Day – our sports day today has been a great success. Thank you to the children for participating so enthusiastically. Thank you so much to our wonderful staff team and our volunteers who helped to make it run so smoothly. Thank you also to families who attended and cheered the children on.

### **Transition to new classes for September 2024**

All our children now know which class teacher they will be moving to in September. Over the remaining weeks of this term, we will be working to ensure that your child starts their new year in September as smoothly as possible.

Our standard transition practice involves:

- Spending time in the new classroom with the new class teacher.
- Meeting the new staff team.
- Dedicated staff meetings to formally discuss children's needs and complete a full handover to ensure that all the necessary information is shared.
- Sharing of school support plans and EHC plans.
- Individual meetings including our SENCO and Deputy Head teacher (Mrs Bradford), Mrs Lavin our learning mentor, current class teacher, current support staff key workers and any other appropriate adults.
- Planning staff provision to try and provide consistency with adults and key workers.

Depending on their individual needs we may also support your child by doing some or all of the following additional transition activities:

- Additional individual opportunities for the child to visit the new classroom when it is empty to familiarise themselves with it.
- Collect pupil voice about preferred place to sit and safe spaces in the classroom and surrounding environment.
- Opportunities to meet the new class teacher 1:1, play a game/complete an activity to start to build relationships.
- Take images and visuals of the classroom that can be used in school and home over the summer holidays.
- Use of social stories to support.

- Bespoke, individual support as and when needed.
- Complete transition booklets and activities.

Gathering parent views is equally as important as we know that you know your child best. If you feel that your child will need any additional support with transition, please let us know.

### Parent Survey

We would like to survey all parents as to their views about aspects of school life. Suggestions you make will be incorporated into our School Development Plan for the next academic year (September 2024 -25). Your views are vital to us in continuing to ensure we are delivering the quality of provision you would like for your children.

We would very much appreciate you taking the time to complete the questionnaire. It can be completed anonymously; the only specific information required being your child’s current year group.

Please could surveys be completed by the end of the day on **Friday 5<sup>th</sup> July at 3.30pm** – results of the survey, together with any action we intend to take as a result of your views, will be shared with you, allowing us to continue to work together to ensure the very highest standards of schooling for all your children.

Please follow this link to the survey:-

<https://forms.office.com/e/atp0SYc1uH>

### Reminder School Attendance, including Persistent Absences and Holidays during Term Time

The government has a persistence absence threshold of 10%. The absence threshold of 10% means that if a pupil is absent for 38 sessions (19 days) of school, they are classified as persistently absent. Schools are urged to inform parents of this threshold and to advise parents that fines will be made for persistent absence, unless there is evidence of a justifiable reason for such absence, for example, significant illness. Failure to make payment will result in legal action for failure to ensure regular attendance at school under Section 444 (1) Education Act 1996.

Timeline	Penalty Charges
Paid within 21 days	£60 per parent per child
After 21 days and before 28 days	£120 per parent per child
After 28 days	The parent will receive a summons to appear before the Magistrate’s Court on the grounds of having failed to secure their child/ children’s regular attendance

As you are aware, I am not allowed to grant any leave of absence during term time, unless there are exceptional circumstances. An exceptional circumstance is usually a one-off, unique situation that is of significant emotional, educational or spiritual value which outweighs the loss of teaching time. It is my duty to strongly urge parents or carers to avoid booking holidays, appointments or visits overseas during term-time. In addition, it is important that I advise you that under the legislation there is an expectation that schools will issue a Fixed Penalty Notice to those parents who take their children on an unauthorised leave of absence (holiday) in term time.

### Calendar of Events

Please see below calendar dates for this academic year. New dates have been added in bold.

#### July 2024

Monday 1 <sup>st</sup>	Allotment session for Year 3
------------------------	------------------------------



Monday 1 <sup>st</sup>	Open evening for new reception parents 6pm
Tuesday 2 <sup>nd</sup> and Wednesday 3 <sup>rd</sup>	New reception children stay and play and lunch
Wednesday 3 <sup>rd</sup>	Class photos for Years 5 and 6 – new date
Wednesday 3 <sup>rd</sup>	Year 4 music concert for parents 2.30pm
Thursday 4 <sup>th</sup> and Friday 5 <sup>th</sup>	Year 6 Bikeability
Monday 8 <sup>th</sup>	Allotment session for Year 5
Tuesday 9 <sup>th</sup>	Informal singing club concert for parents at 4pm
Wednesday 10 <sup>th</sup>	Reports to parents
Thursday 11 <sup>th</sup>	Mystery Readers 2.45pm
Monday 15 <sup>th</sup>	Allotment session for Year 3
Tuesday 16 <sup>th</sup>	Year 6 Leaver's Performance at 2pm
Wednesday 17 <sup>th</sup>	Year 3 visit to Macclesfield Forest
Wednesday 17 <sup>th</sup>	Year 6 Leaver's Performance at 7pm
Friday 19 <sup>th</sup>	Ukulele/guitar lesson performance for parents – 2pm for children in Years 1, 2, 3; 2.30pm for children in Years 4, 5, 6
Monday 22 <sup>nd</sup>	Allotment session for Year 3
Tuesday 23 <sup>rd</sup>	Term ends at 1.20pm
Wednesday 24 <sup>th</sup> July – Tuesday 3 <sup>rd</sup> September (inclusive)	School closed (school reopens for children Wednesday 4 <sup>th</sup> September)

**PLEASE NOTE:** School will be closing for pupils on the last day of each term at 1.20pm. Children will eat their lunch in school and then be ready to be collected at 1.20pm. This will commence from the end of Summer Term 2024 (ie on Tuesday 23<sup>rd</sup> July) and each term moving forward. This is to bring us in line with Holmes Chapel High School and other schools in the Aspire Trust. Children must be collected on this occasion, as they will not be allowed to walk home on their own. Thank you for your support.

A few dates for next year:

### September 2024

Monday 2 <sup>nd</sup>	Inset day
Tuesday 3 <sup>rd</sup>	Inset day
Wednesday 4 <sup>th</sup>	Autumn term starts

### October 2024

Friday 25 <sup>th</sup>	Inset day
Monday 28 <sup>th</sup> October – Friday 1 <sup>st</sup> November	Half term – school closed

### November 2024

Tuesday 5 <sup>th</sup>	FLUENZ
-------------------------	--------

### December 2024

Friday 20 <sup>th</sup>	Term ends at 1.20pm
Monday 23 <sup>rd</sup> December – Friday 3 <sup>rd</sup> January 2025	School closed

Kind regards,  
Fiona Gresty  
Headteacher

